



DEPARTMENT OF ENERGY
Environmental Management Los Alamos Field Office (EM-LA)
Los Alamos, New Mexico 87544

Mr. John E. Kieling
Bureau Chief
Hazardous Waste Bureau
New Mexico Environment Department
2905 Rodeo Park Drive East, Building 1
Santa Fe, NM 87505-6303



APR 29 2019

Dear Mr. Kieling:

Subject: Submittal of the 2019 Monitoring Plan for Los Alamos/Pueblo Watershed
Sediment Transport Mitigation Project

Enclosed please find two hard copies with electronic files of the "2019 Monitoring Plan for Los Alamos/Pueblo Watershed Sediment Transport Mitigation Project." The objective of this monitoring plan is to evaluate the effects of mitigation measures undertaken in the Los Alamos and Pueblo Canyons watershed under the New Mexico Environment Department- (NMED-) approved "Interim Work Plan to Mitigate Contaminated Sediment Transport in the Los Alamos and Pueblo Canyons." The "2018 Monitoring Plan for Los Alamos/Pueblo Watershed Sediment Transport Mitigation Project" was approved by NMED on June 4, 2018. The 2019 plan satisfies Appendix B, Milestones and Targets, Milestone 4, of the 2016 Compliance Order on Consent (Consent Order).

Pursuant to Section XXIII.C of the Consent Order, a pre-submission review meeting was held with the U.S. Department of Energy Environmental Management Los Alamos Field Office (EM-LA); Newport News Nuclear BWXT-Los Alamos, LLC (N3B); and NMED on February 6, 2019, to discuss changes in monitoring requirements for 2019.

If you have any questions, please contact Amanda White at (505) 309-1366 (amanda.white@em-la.doe.gov) or Cheryl Rodriguez at (505) 665-5330 (cheryl.rodriguez@em.doe.gov).

Sincerely,

Arturo Q. Duran
Compliance and Permitting Manager
Environmental Management
Los Alamos Field Office

Enclosures:

1. Two hard copies with electronic files – 2019 Monitoring Plan for Los Alamos/Pueblo Watershed Sediment Transport Mitigation Project (EM2019-0132)

cc (letter with hard-copy enclosure[s]):

S. Veenis, N3B

C. Rodriguez, EM-LA

cc (letter with CD/DVD enclosure[s]):

H. Burgess, Los Alamos County, Los Alamos, NM (2 copies)

cc (letter and enclosure[s] emailed):

L. King, EPA Region 6, Dallas, TX

R. Martinez, San Ildefonso Pueblo, NM

D. Chavarria, Santa Clara Pueblo, NM

C. Vokes, Buckman Direct Diversion, Santa Fe, NM

S. Yanicak, NMED

D. Cuthbertson, N3B

E. Day, N3B

E. Evered, N3B

J. Legare, N3B

F. Lockhart, N3B

G. Morgan, N3B

B. Robinson, N3B

K. Rodriguez, N3B

J. von Rohr, N3B

A. White, N3B

A. Duran, EM-LA

D. Nickless, EM-LA

D. Rhodes, EM-LA

emla.docs@em.doe.gov

N3B Records

Public Reading Room (EPRR)

PRS Website

EM-LA-40AD-00431


2019 Monitoring Plan for Los Alamos/Pueblo Watershed Sediment Transport Mitigation Project

Newport News Nuclear BWXT-Los Alamos, LLC (N3B), under the U.S. Department of Energy Office of Environmental Management Contract No. 89303318CEM000007 (the Los Alamos Legacy Cleanup Contract), has prepared this document pursuant to the Compliance Order on Consent, signed June 24, 2016. The Compliance Order on Consent contains requirements for the investigation and cleanup, including corrective action, of contamination at Los Alamos National Laboratory. The U.S. government has rights to use, reproduce, and distribute this document. The public may copy and use this document without charge, provided that this notice and any statement of authorship are reproduced on all copies.


2019 Monitoring Plan for Los Alamos/Pueblo Watershed Sediment Transport Mitigation Project

April 2019

Responsible program director:

Bruce Robinson		Program Director	Water Program	4/17/2019
Printed Name	Signature	Title	Organization	Date

Responsible N3B representative:

Erich Evered		Program Manager	N3B Environmental Remediation Program	4/18/2019
Printed Name	Signature	Title	Organization	Date

Responsible DOE EM-LA representative:

Arturo Q. Duran		Compliance and Permitting Manager	Office of Quality and Regulatory Compliance	4/22/19
Printed Name	Signature	Title	Organization	Date

CONTENTS

1.0	INTRODUCTION	1
2.0	MONITORING GEOMORPHIC CHANGES	2
2.1	LiDAR Error Assessment.....	3
3.0	MONITORING VEGETATION CHANGES	3
4.0	MONITORING STORM WATER RUNOFF.....	4
4.1	2019 Storm Water Monitoring Locations Inspection, Maintenance, and Sample Retrieval Plan	4
4.2	Storm Water Sampling and Analysis Plan.....	5
4.3	Stage and Discharge Monitoring	7
4.4	Inspections of Erosion and Sediment Control Structures.....	7
4.5	Sediment Sampling and Analysis Plan.....	7
4.6	Comparison of Unfiltered Metals and Metals Suspended in Sediment.....	7
4.7	Data Exceptions.....	7
5.0	2019 MONITORING PLAN CHANGES	7
6.0	REPORTING	8
7.0	REFERENCES AND MAP DATA SOURCES	8
7.1	References	8
7.2	Map Data Sources.....	11

Figures

Figure 1.0-1	Monitoring locations and sediment trap mitigation sites in Los Alamos and Pueblo Canyons.....	13
Figure 1.0-2	Detention basins and sampling locations below the SWMU 01-001(f) drainage.....	14
Figure 4.1-1	Three-tiered approach to sample retrieval when 1 business day collection is not feasible.....	15
Figure 4.2-1	Sampled storm event peak discharge distribution 2010–2018.....	17

Tables

Table 1.0-1	Monitoring Plans Submitted since 2010	21
Table 2.0-1	Significant Geomorphic Changes and Associated Peak Discharges	22
Table 4.0-1	Locations, Analytical Suites, and Drivers for Storm Water Sampling	24
Table 4.2-1	Sampled Storm Distribution in Relationship to Proposed Trip Level.....	26
Table 4.2-2	Analytical Requirements for Storm Water Samples.....	27
Table 4.2-3	Sampling Sequence for Collection of Storm Water Samples at the Detention Basins and Vegetative Buffer below the SWMU 01-001(f) Drainage	29
Table 4.2-4	Sampling Sequence for Collection of Storm Water Samples at E026, E030, E055, E055.5, and E056	30
Table 4.2-5	Sampling Sequence for Collection of Storm Water Samples at E038, E039.1, and E040.....	31

Table 4.2-6	Sampling Sequence for Collection of Storm Water Samples at E042.1	32
Table 4.2-7	Sampling Sequence for Collection of Storm Water Samples at E059.5 and E059.8	34
Table 4.2-8	Sampling Sequence for Collection of Storm Water Samples at E050.1 and E060.1	36

1.0 INTRODUCTION

The objective of this monitoring plan is to describe methods and frequency of monitoring in the Los Alamos and Pueblo Canyons (LA/P) watershed. This monitoring plan has been developed to satisfy the requirements of the New Mexico Environment Department– (NMED-) approved “Interim Measure Work Plan to Mitigate Contaminated Sediment Transport in Los Alamos and Pueblo Canyons” (LANL 2008, 101714), NMED’s “Approval with Modification, Interim Measure Work Plan to Mitigate Contaminated Sediment Transport in Los Alamos and Pueblo Canyons” (NMED 2008, 103007), and in response to NMED’s comments on the annual “Monitoring Plan for Los Alamos/Pueblo Watershed Sediment Transport Mitigation Project” (Table 1.0-1). In accordance with these work plans, approvals, and annual monitoring plans, Los Alamos National Laboratory (LANL or the Laboratory) has undertaken several activities to reduce flood energy and associated sediment transport. Because contaminants migrate with sediment entrained in runoff, reduced sediment transport will thus reduce contaminant transport, which is the primary objective of the watershed mitigations.

Monitoring proposed within this plan is designed to satisfy four purposes:

1. Monitoring is described to evaluate the performance of the controls installed to mitigate sediment transport. Two types of monitoring that began in 2010 are designed to meet this objective:
 - a. Monitoring geomorphic changes in the canyon bottom facilitates continued evaluation of sediment control mitigation measures; and
 - b. Collecting and analyzing storm water runoff samples supports assessment of the performance of sediment control measures.
2. Monitoring is described to support the analyses requested by NMED to assess attainment of designated uses. Monitoring concentrations of dissolved metals and total recoverable metals and other pollutants, as requested by NMED in its approval of the 2010 monitoring plan (NMED 2010, 108444) and as adjusted via the annual monitoring plans, supports the determination of whether or not surface waters of the state are attaining designated uses.
3. Monitoring of contaminants in affected environmental media at U.S. Department of Energy (DOE) sites is required under DOE Order 458.1 Change 3, “Radiation Protection of the Public and the Environment” and reporting is required under DOE Order 231.1B, “Environment, Safety, and Health Reporting.”
4. Monitoring is described to satisfy requirements of the memorandum of understanding (MOU) between the DOE and the Buckman Direct Diversion Board (BDDDB) regarding water-quality monitoring (hereafter, the DOE-BDDDB MOU) (DOE and BDD Board 2017, 602995). Analysis of gross beta, isotopic uranium, radium-226, and radium-228 at gaging stations E050.1 and E060.1 is being performed to support the DOE-BDDDB MOU.

Storm water and geomorphic monitoring conducted under this 2019 monitoring plan will evaluate the potential impacts of any changes that occur in the watershed and the efficacy of the mitigations over time. Figures 1.0-1 and 1.0-2 show storm water monitoring locations and sediment control features. Table 1.0-1 provides a summary of annual monitoring plans and approvals under which monitoring has been conducted since 2010.

Information on radioactive materials and radionuclides, including the results of sampling and analysis of radioactive constituents, is voluntarily provided in this plan to NMED in accordance with DOE Order 458.1. Results from storm water events are systematically uploaded to the publically accessible environmental monitoring database, Intellus New Mexico, available at <http://www.intellusnm.com/> (NMED 2016, 601563).

2.0 MONITORING GEOMORPHIC CHANGES

Monitoring of geomorphic changes (e.g., sediment deposition or erosion) associated with the mitigation measures was conducted in 2018 using two methods: (1) ground-based channel thalweg and bank surveys; and (2) repeat photographs. The surveys have been conducted annually to document geomorphic changes that may have occurred during the previous summer monsoon season. Figure 1.0-1 shows the monitoring areas where surveys have been conducted in 2018.

A field visit will be scheduled in conjunction with NMED at the end of the monitoring year to observe whether geomorphic changes have occurred and what level of monitoring needs to be conducted in order to quantify the change. If storm water peak discharge at any gaging station in the LA/P watershed is greater than 50 cubic feet per second (cfs), the upgradient reach will be visually inspected at the end of the monsoonal period to document qualitative geomorphic changes. Biannual and greater than 50 cfs inspections of the grade-control structures (GCSs) and detention basins will continue to be performed.

As of 2019, aerial-based light detection and ranging (LiDAR) surveys will be performed triennially to maintain a baseline and after large disturbance events. Previously, ground-based bank and thalweg surveys were performed annually along with a field visit with NMED at the end of the monitoring year to observe whether geomorphic changes occurred and what level of monitoring needed to be conducted in order to quantify the change, potentially including a new LiDAR survey. LiDAR surveys began in 2014, repeat surveys were performed in 2015 and 2016, a new baseline was performed in 2018, and the next LiDAR survey is planned for 2021 unless a large disturbance event occurs, in which case the LiDAR survey would be performed that year. A large disturbance event has been defined for each canyon based on historical knowledge. Storm events where significant erosion or channel alterations occurred were examined, along with the associated discharge at the nearest gaging stations (Table 2.0-1). Based on this analysis, the discharge magnitude that has the potential to cause significant erosion was determined to be 300 cfs in Los Alamos Canyon, 250 cfs in Pueblo Canyon, and 350 cfs in DP Canyon. To simplify monitoring, a discharge of 300 cfs is proposed for all of the canyons. If discharge at one or more gaging station reaches this discharge value, it will be considered a large storm event that might warrant an aerial-based geomorphic and vegetation survey before the routine triennial survey. After a field visit is performed, if significant erosion or vegetation disturbance is observed, aerial surveys will be performed after/during the monsoon season (after for geomorphic surveys and during for vegetation surveys). The following details the plan to monitor quantitative geomorphic changes via LiDAR surveys if events warrant.

A baseline LiDAR aerial survey was performed in 2018 during which points were measured at a density at least equivalent to the 2016 LiDAR data set (18–24 points per m²). The LiDAR surveys will provide a detailed digital elevation model (DEM) of the entire active channel within each monitoring area so a comparison with the previous survey's DEM can show areas of geomorphic change. If noteworthy features are identified in the LiDAR comparison, the features will be field-checked and additional ground-based survey methods may be implemented.

2.1 LiDAR Error Assessment

An estimate of the 95% confidence interval (2 standard deviations) of the root-mean-squared error (RMSE) for the DEM elevations will be obtained by comparing a subset of aerial LiDAR-derived point elevations with ground-surveyed global positioning system (GPS) point elevations (vertical accuracy for these GPS points is better than 0.1 ft). In general, error values for the DEM surface within areas vegetated with reed canary grass and cattails tend to be higher than the unvegetated channel surfaces. A spatially variable error value will be generated for each sediment mitigation monitoring area (Figure 1.0-1). The RMSE error value of each pixel is subject to the area's individual "fuzzy inference system" model to compute the spatially variable error of the DEM surface. The lower limit of detection for each analysis area is defined by standard error propagation in addition/subtraction operations of the lowest error value.

The propagated error values provide the threshold above/below which any values in the DEM of difference (DoD) will be assumed to represent actual elevation change. The variable error surfaces will be calibrated to the 95% confidence interval RMSE values calculated for respective monsoonal period DEMs and propagated through the DoD calculations. Net changes for the study reach will then be calculated by summing the DoD over areas of erosion/deposition above or below the error threshold. As mentioned previously, DoD values above the threshold are assumed to represent geomorphic erosion or deposition. These identified elevation changes will be field verified using visual inspection methods to determine if geomorphic change occurred. Areas of confirmed or rejected geomorphic change will be identified and documented. Regardless of field verification confirmation, all DoD values will be used to calculate net volume changes. Topographic elevation changes will be classified as either channel erosion/deposition processes (e.g., aggradation or incision) or as other types of mass wasting, such as falls and slides/slumps. Because of the nature of rock/soil falls and slumps, large topographic changes may be evident (i.e., detected above the uncertainty threshold and confirmed in the field) that actually have small (if any) contribution to the net volume change within the channels. Therefore, these types of topographic elevation changes detected during DoD analyses may not yield results that can be thought of as volumetrically equivalent to within-channel geomorphic processes.

Using a spatially variable error in DoD calculations has made it possible to more accurately assess geomorphic processes on surfaces that have been traditionally difficult to model with LiDAR data. The incorporation of spatially variable error surfaces into the DoD calculations improves the analysis of steeply inclined surfaces (i.e., banks) and will allow for an accurate assessment of geomorphic activity on such features for the comparison between DEMs.

3.0 MONITORING VEGETATION CHANGES

Repeat surveys and photographs of the lower willow planting area were performed in 2018. The surveys have been conducted annually to document qualitative vegetation changes that may have occurred during the previous summer monsoon season. Figure 1.0-1 shows the monitoring areas where surveys were conducted in 2018.

Aerial vegetation monitoring was not performed in 2018; however, a baseline vegetation survey will be performed in 2019 and will be conducted triennially, with the next survey to be conducted in 2022. A hyperspectral sensor will be deployed via plane or unmanned aerial vehicle, and will be used to classify vegetation species and determine vegetation density, stand height, and spatial extent. In addition, the normalized difference vegetation index (NDVI), which is an indicator of photosynthetic activity using the red and near-infrared bands, will be computed as a measure of the health of the Pueblo Canyon wetlands, including the historical upper and lower willow planting areas.

4.0 MONITORING STORM WATER RUNOFF

In 2019, storm water monitoring will be conducted at 13 gaging stations (Figure 1.0-1) and 2 ungaged stations (denoted as sampling locations in Figure 1.0-2) within the LA/P watershed. No changes to monitoring locations are planned from 2018 to 2019. Gaging stations are located in order to monitor sediment transport and performance of mitigations effectively throughout each watershed. Each gaging station automatically collects storm water runoff using ISCO samplers. Storm water analytical suites and the associated reports where data will be presented for each gaging station are presented in Table 4.0-1.

The goal of the sampling is to collect data that: (1) represent spatial and temporal variations in potential contaminant concentrations and suspended sediment concentrations (SSC) in storm water; (2) allow evaluation of short- and long-term trends in contaminant concentrations, SSC, and suspended sediment yield; (3) provide data to support the determination of whether or not surface waters of the state are attaining designated uses; and (4) meet requirements of the DOE-BDDDB MOU. The monitoring strategy described below was developed to achieve these goals.

In 2019, in addition to the monitoring proposed in Table 4.0-1, samples collected from or during at least one storm flow event at gaging stations E050.1 and E060.1 will be analyzed for dissolved metals, total metals (in water), SSC, and target analyte list (TAL) metals in the sample-sediment fraction on a dry-weight basis. Gaging stations E050.1 and E060.1 were chosen because they are the farthest downstream sampling locations in the Los Alamos (above the Pueblo confluence) and Pueblo watersheds, respectively, and thus are integrators of any upstream contaminants. These special sampling event(s) will be selected per an average flow event (excluding events that are too large or too small based on the historical record at the particular gaging station) during the mid-monsoonal season, such as during August. The goal of collecting these data is to compare the estimated concentrations using SSC to the measured concentrations from the metals analysis on the sediment fraction to determine if they are statistically similar. Sample collection and analysis methodology suggested by NMED and described in section 4.6 of this monitoring plan will be adopted. Results of these analyses will be presented in the “2019 Monitoring Report for Los Alamos/Pueblo Watershed Sediment Transport Mitigation Project.”

4.1 2019 Storm Water Monitoring Locations Inspection, Maintenance, and Sample Retrieval Plan

Storm water monitoring at all locations proposed for 2019 will occur using ISCO-type automated pump samplers. Two sampling locations, CO111041 and CO101038 in Figure 1.0-2, are not gaged and are proposed for monitoring at the detention basins below Solid Waste Management Unit (SWMU) 01-001(f). Monitoring requirements at these locations are listed in Table 4.0-1. These sampling locations will allow evaluation of how the sediment detention basins and associated vegetative buffer below the basins are performing. These monitoring locations will be inspected following a rain event exceeding 0.25-in. in a 30-min period as recorded at the rain gage at E055.5.

All other storm water monitoring will occur at gaging stations. Battery voltage, stage height, and sensor function at each gaging station will be remotely monitored daily. Flow-measurement devices and telemetry at gaging stations E050.1 and E060.1 will be inspected at least weekly and after each flow event throughout the year. Automated samplers, flow-measurement devices, and telemetry at other gaging stations will be inspected following a discharge event with peak discharge greater than the trip level and on a rolling 30-day schedule following the sampler trip discharge event from June 1 to October 31. The rolling 30-day schedule will ensure that gaging stations are inspected at least monthly and after sampler trip discharge storm events. Gaging station inspections will occur monthly from November 1 to May 31. Equipment found to be damaged or malfunctioning will be repaired within

5 business days after the problem is identified. If the time to repair monitoring equipment at E050.1 and E060.1 is expected to exceed 48-hr, DOE will notify BDDDB per the DOE-BDDDB MOU.

Automated samplers at gaging stations will be deployed and operational on or before June 1. All samples retrieved will be attempted within 1 business day after collection; however, this is not always feasible, such as with a site-wide storm event. If this is the case, sample retrieval will be performed using the following three-tiered priority order:

1. BDDDB-related gaging stations E050.1 and E060.1;
2. Gaging stations bounding watershed mitigations at E038, E039.1, E042.1, E059.5, E059.8; and
3. Other gaging stations at E026, E030, E040, E055, E055.5, E056, CO101038, and CO111041.

Figure 4.1-1 illustrates this three-tiered approach to sample retrieval. Deviations from the planned inspection, maintenance, and sample collection objectives will be described in the “2019 Monitoring Report for Los Alamos/Pueblo Watershed Sediment Transport Mitigation Project.”

4.2 Storm Water Sampling and Analysis Plan

Evaluation of the performance of sediment controls will be supported by repeat analyses of SSC through each sampled storm at gaging stations above and below each watershed mitigation. Storm water runoff sampling at E050.1 and E060.1 will be triggered by discharges of approximately 5 cfs. Storm water sampling at E026, E059.5, and E059.8 will be triggered by discharges of approximately 5 cfs. Storm water runoff sampling at E038 will be triggered by discharges of approximately 100 cfs. Storm water runoff sampling at the remainder of the gaging stations (E030, E039.1, E040, E042.1, E055, E055.5, and E056) will be triggered by discharges of approximately 50 cfs. At gaging stations where trip levels are to be raised and the number of samples is to be reduced in comparison with the 2018 Monitoring Plan (E030, E038, E039.1, E040, E042.1, E055, E055.5, and E056), the majority of past sampling events have occurred at or below the proposed discharge trip level (Table 4.2-1). Figure 4.2-1 presents the distribution of peak discharges from sampled storm water events between 2010 and 2018. These histograms show that a majority of sampling has been performed on the lower end of the discharge scale at each of the gaging stations; thus, in 2019, the monitoring focus will be on the higher end of the discharge scale in order to fill data gaps and to collect samples from storms that have a greater potential to erode sediment and move contaminants.

Four storm water samples are planned at each of the following gaging stations: E026, E050.1, E059.5, E059.8, and E060.1. Two storm water samples are planned at each of the following gaging stations: E030, E038, E039.1, E040, E042.1, E055, E055.5, and E056. A reduction of the number of samples from four to two is proposed at these locations because a considerable number of samples have been collected at these locations and those samples have sufficiently characterized the storm water, particularly at the lower end of the discharge scale. The LA/P watershed system has been shown to be stable over the past 9 yr unless there is a large disturbance event, in which case the number of samples to be collected will be reconsidered. Storm water runoff sampling for chemical and radiochemical analyses at all gaging stations will be triggered 10 min after the maximum discharge exceeding the triggering discharge. Sampling at the detention basins below SWMU 01-001(f) will be triggered by liquid-level actuators detecting the presence of water above each sampler's intake. The chemical and radiochemical analyses will be bounded by analysis of SSC to calculate an estimate of the sediment content of each chemical and radiochemical analysis.

Analytical requirements for storm water samples collected to satisfy the four monitoring purposes are presented in Table 4.2-2. Samples at gaging stations will be collected using automated storm water samplers that contain a carousel of twenty-four 1-L bottles and/or twelve 1-L bottles, as specified in

Tables 4.2-3 through 4.2-8. Sample collection inlets will be placed a minimum of 0.33 ft above the bottom of natural stream channels and at 0.17 ft above the bottom of supercritical flumes. The sampling approach summarized above is intended to allow characterization of suspended sediment flux and contaminant concentrations from each portion of the hydrograph consisting of:

1. Rapidly rising limb
2. Short-duration peak
3. Rapidly receding limb following the peak, and
4. Longer-duration recessional limb following the peak.

To characterize water quality entering and leaving the sediment detention basins and adjoining vegetative buffer below the SWMU 01-001(f) drainage, automated pump samplers will collect storm water from one location immediately upstream of sediment basin 1 and one location at the terminus of the vegetative buffer up to four times annually when storm water discharge is occurring (Figure 1.0-2).

Analytical suites vary according to monitoring groups and are based on key indicator contaminants, NMED requests, and the DOE-BDDDB MOU for portions of each watershed. Table 4.0-1 shows the monitoring groups, the analytical suite for each location, and the report associated with each monitoring suite. The results of SSC analyses will be used to calculate the total mass/activity transported during storm water runoff events at the gaging stations. Particle-size analyses conducted in conjunction with selected SSC analyses will support characterization of organic chemicals and radionuclides.

The list of analytical suites for each monitoring group presented in Table 4.0-1 is prioritized to guide what analyses will be conducted if the water volume collected from a storm event is not sufficient for all the planned suites. The analytical method, expected method detection limit (MDL), and minimal detectable activity (MDA) (for radionuclides) are presented in Table 4.2-2. The sampling sequence for CO101038 and CO111041 is presented in Table 4.2-3. The sampling sequence for E026, E030, E055, E055.5, and E056 is presented in Table 4.2-4. Table 4.2-5 presents the sampling sequence at E038, E039.1, and E040. Table 4.2-6 presents the sampling sequence at E042.1. Table 4.2-7 presents the sampling sequence at E059.5 and E059.8. Table 4.2-8 presents the sampling sequence at E050.1 and E060.1. Additional samples beyond the required samples may potentially be submitted for chemical and radiochemical analyses at gaging stations E038, E059.5, E059.8, and E042.1 if samples are collected during an event at their paired downstream gaging stations (E039.1, E059.8, E060.1, and E050.1, respectively).

Total suspended sediment transport during a storm event is determined by sampling discharge periodically for SSC analysis throughout the hydrograph. Samples for SSC measurements will be collected at 2-min intervals for the first 30 min, then at 20-min intervals for the following 160 min if runoff is available. Repeat measurements will be taken above and below the DP Canyon GCS at E038 and E039.1, above and below the Los Alamos Canyon low-head weir at E042.1 and E050.1, and above and below the Pueblo Canyon drop structure and GCS at E059.5, E059.8, and E060.1 to better characterize the performance of the structures. At these stations, a second sampler is dedicated to collecting storm water for SSC analyses with the objective of representing most or all of the duration of runoff. Collecting SSC samples at 2-min intervals during the first 30 min allows characterization of the rapidly changing early part of the hydrograph.

4.3 Stage and Discharge Monitoring

Storm water runoff (in the form of stage and discharge) at each of the gaging stations listed in Table 4.0-1 and gaging station E099 will be monitored continuously throughout the year. Rating curves are used to convert stage to discharge. Rating curves for the gaging stations are updated following channel-forming flood events.

4.4 Inspections of Erosion and Sediment Control Structures

Erosion and sediment control structures and monitoring stations will be inspected after storm events exceeding 50 cfs, or other channel-forming flood events, within 3 business days. Repairs will be made as necessary to ensure such structures and other storm water mitigation features continue to function as intended.

4.5 Sediment Sampling and Analysis Plan

Sediment sampling is conducted annually within the LA/P watershed as part of voluntary monitoring conducted for the Annual Site Environmental Report (ASER). The results of the sediment sampling conducted in 2019 will be presented in the 2019 ASER.

4.6 Comparison of Unfiltered Metals and Metals Suspended in Sediment

Storm water collected in two 1-L polyethylene sample bottles from each storm event at E050.1 and E060.1 will be quantitatively split using the Dekaport sample splitter into 2/10 (400-mL), 2/10 (400-mL), 3/10 (600-mL), and 3/10 (600-mL) portions. One of the 400-mL aliquots will be filtered using a 0.45- μ m pore size membrane for dissolved TAL metals analysis. The other 400-mL aliquot will be submitted for total recoverable TAL metals analysis. One of the 600-mL aliquots will be submitted for SSC analysis. Solids from the remaining 600-mL aliquot will be separated from the liquid phase using filtration techniques, dried, and submitted for TAL metals analysis. Concentrations of metals analyzed from the solid sample will be reported on a dry weight basis. These data collected in 2019 will be used to evaluate the precision and accuracy of normalized concentrations of metals estimated from analysis of SSC and unfiltered storm water collected in previous years. This analysis will be presented in the 2019 monitoring report.

4.7 Data Exceptions

Low bias of analytical results in high-sediment-content storm water has been observed in analyses performed by gamma spectroscopy, alpha spectroscopy, inductively coupled plasma (ICP) mass spectroscopy and ICP optical emission spectroscopy. This low bias can be avoided when the solid phase and liquid phase of each biphasic sample are analyzed separately and the results mathematically recombined.

5.0 2019 MONITORING PLAN CHANGES

Changes from 2018 to 2019 monitoring are as follows:

- Changed geomorphic monitoring from ground-based bank and thalweg surveys annually and aerial-based LiDAR surveys biennially to aerial-based LiDAR triennially.

- Changed vegetation monitoring from ground-based qualitative surveys and repeat photographs annually to aerial-based hyperspectral surveys triennially, to include the Pueblo wetlands and the upper and lower willow planting areas. Vegetation monitoring will include species, density, height, extent, and NDVI.
- Changed trip levels:
 - ❖ Lowered trip level at E026, E059.5, and E059.8 from 10 cfs to 5 cfs to facilitate the collection of samples;
 - ❖ Raised trip level at E030, E039.1, E040, E042.1, E055, E055.5, and E056 from 10 cfs to 50 cfs to collect more samples from the larger storm events that have been sampled less frequently and that tend to move more sediment and contaminants; and
 - ❖ Raised trip level at E038 from 40 cfs to 100 cfs to collect more samples from the larger storm events that have been sampled less frequently and that tend to move more sediment and contaminants.
- Changed number of samples:
 - ❖ Decreased number of samples from four to two at E030, E038, E039.1, E040, E042.1, E055, E055.5, and E056 because a considerable number of samples have been collected at these locations and have sufficiently characterized the storm water, particularly at the lower end of the discharge scale. In the case of a large disturbance event, the number of samples to be collected will be reconsidered.

6.0 REPORTING

All data collected as part of this 2019 monitoring plan will be presented in the “2019 Monitoring Report for Los Alamos/Pueblo Watershed Sediment Transport Mitigation Project,” to be submitted to NMED by April 30, 2020. The “2020 Monitoring Plan for Los Alamos/Pueblo Watershed Sediment Transport Mitigation Project” will also be submitted to NMED by April 30, 2020. Monitoring conducted as part of this 2019 monitoring plan to determine whether or not waters of the state are attaining designated uses and to fulfill monitoring requirements in DOE Order 450.1A (superseded by 436.1) will be reported in the “2019 Monitoring Report for Los Alamos/Pueblo Watershed Sediment Transport Mitigation Project.” Monitoring conducted as part of this 2019 monitoring plan solely to fulfill requirements of the DOE-BDDB MOU will be made available publically in Intellus New Mexico, available at <http://www.intellusnm.com/>. All analytical data, stream discharge measurements, and DEM measurements collected as a result of this plan will be provided in the “2019 Monitoring Report for Los Alamos/Pueblo Watershed Sediment Transport Mitigation Project.”

7.0 REFERENCES AND MAP DATA SOURCES

7.1 References

The following reference list includes documents cited in this report. Parenthetical information following each reference provides the author(s), publication date, and ERID, ESHID, or EMID. This information is also included in text citations. ERIDs were assigned by the Laboratory’s Associate Directorate for Environmental Management (IDs through 599999); ESHIDs were assigned by the Laboratory’s Associate Directorate for Environment, Safety, and Health (IDs 600000 through 699999); and EMIDs are assigned by Newport News Nuclear BWXT-Los Alamos (N3B) (IDs 700000 and above). IDs are used to locate

documents in N3B's Records Management System and in the Master Reference Set. The NMED Hazardous Waste Bureau and N3B maintain copies of the Master Reference Set. The set ensures that NMED has the references to review documents. The set is updated when new references are cited in documents.

DOE and BDD Board (U.S. Department of Energy and Buckman Direct Diversion Board), November 2017. "Memorandum of Understanding between the U.S. Department of Energy and the Buckman Direct Diversion Board Regarding Water Quality Monitoring," Santa Fe, New Mexico. (DOE and BDD Board 2017, 602995)

LANL (Los Alamos National Laboratory), February 2008. "Interim Measure Work Plan to Mitigate Contaminated Sediment Transport in Los Alamos and Pueblo Canyons," Los Alamos National Laboratory document LA-UR-08-1071, Los Alamos, New Mexico. (LANL 2008, 101714)

LANL (Los Alamos National Laboratory), October 2009. "Monitoring Plan for Los Alamos and Pueblo Canyons Sediment Transport Mitigation Project," Los Alamos National Laboratory document LA-UR-09-6563, Los Alamos, New Mexico. (LANL 2009, 107457)

LANL (Los Alamos National Laboratory), March 2011. "2011 Monitoring Plan for Los Alamos and Pueblo Canyons Sediment Transport Mitigation Project," Los Alamos National Laboratory document LA-UR-11-0943, Los Alamos, New Mexico. (LANL 2011, 201578)

LANL (Los Alamos National Laboratory), September 2012. "2012 Monitoring Plan for Los Alamos and Pueblo Canyons Sediment Transport Mitigation Project, Revision 2," Los Alamos National Laboratory document LA-UR-12-24779, Los Alamos, New Mexico. (LANL 2012, 222833)

LANL (Los Alamos National Laboratory), June 2013. "2013 Monitoring Plan for Los Alamos and Pueblo Canyons Sediment Transport Mitigation Project, Revision 1," Los Alamos National Laboratory document LA-UR-13-24419, Los Alamos, New Mexico. (LANL 2013, 243432)

LANL (Los Alamos National Laboratory), May 2014. "2014 Monitoring Plan for Los Alamos and Pueblo Canyons Sediment Transport Mitigation Project," Los Alamos National Laboratory document LA-UR-14-22549, Los Alamos, New Mexico. (LANL 2014, 256575)

LANL (Los Alamos National Laboratory), May 2015. "2015 Monitoring Plan for Los Alamos/Pueblo Watershed Sediment Transport Mitigation Project," Los Alamos National Laboratory document LA-UR-15-21412, Los Alamos, New Mexico. (LANL 2015, 600438)

LANL (Los Alamos National Laboratory), April 2016. "2016 Monitoring Plan for Los Alamos/Pueblo Watershed Sediment Transport Mitigation Project," Los Alamos National Laboratory document LA-UR-16-22543, Los Alamos, New Mexico. (LANL 2016, 601434)

LANL (Los Alamos National Laboratory), April 2017. "2017 Monitoring Plan for Los Alamos/Pueblo Watershed Sediment Transport Mitigation Project," Los Alamos National Laboratory document LA-UR-17-23270, Los Alamos, New Mexico. (LANL 2017, 602342)

LANL (Los Alamos National Laboratory), April 2018. "2018 Monitoring Plan for Los Alamos/Pueblo Watershed Sediment Transport Mitigation Project," Los Alamos National Laboratory document LA-UR-18-23238, Los Alamos, New Mexico. (LANL 2018, 603015)

NMED (New Mexico Environment Department), July 18, 2008. "Approval with Modifications, Interim Measure Work Plan to Mitigate Contaminated Sediment Transport in Los Alamos and Pueblo Canyons," New Mexico Environment Department letter to D. Gregory (DOE-LASO) and D. McInroy (LANL) from J.P. Bearzi (NMED-HWB), Santa Fe, New Mexico. (NMED 2008, 103007)

NMED (New Mexico Environment Department), January 11, 2010. "Approval with Modifications, Los Alamos and Pueblo Canyons Sediment Transport Monitoring Plan," New Mexico Environment Department letter to G.J. Rael (DOE-LASO) and M.J. Graham (LANL) from J.P. Bearzi (NMED-HWB), Santa Fe, New Mexico. (NMED 2010, 108444)

NMED (New Mexico Environment Department), June 3, 2011. "Approval with Modifications, 2011 Monitoring Plan for Los Alamos and Pueblo Canyons Sediment Transport Mitigation Project," New Mexico Environment Department letter to G.J. Rael (DOE-LASO) and M.J. Graham (LANL) from J.E. Kieling (NMED-HWB), Santa Fe, New Mexico. (NMED 2011, 203705)

NMED (New Mexico Environment Department), January 23, 2013. "Approval, 2012 Monitoring Plan for Los Alamos and Pueblo Canyons, Sediment Transport Mitigation Project, Revision 2," New Mexico Environment Department letter to P. Maggiore (DOE-LASO) and J.D. Mousseau (LANL) from J.E. Kieling (NMED-HWB), Santa Fe, New Mexico. (NMED 2013, 521854)

NMED (New Mexico Environment Department), July 19, 2013. "Approval, 2013 Monitoring Plan for Los Alamos and Pueblo Canyons Sediment Transport Mitigation Project, Revision 1," New Mexico Environment Department letter to P. Maggiore (DOE-LASO) and J.D. Mousseau (LANL) from J.E. Kieling (NMED-HWB), Santa Fe, New Mexico. (NMED 2013, 523106)

NMED (New Mexico Environment Department), June 12, 2015. "Approval with Modifications, 2015 Monitoring Plan for Los Alamos/Pueblo Watershed Sediment Transport Mitigation Project," New Mexico Environment Department letter to C. Gelles (DOE-NA-LA) and M.T. Brandt (LANL) from J.E. Kieling (NMED-HWB), Santa Fe, New Mexico. (NMED 2015, 600507)

NMED (New Mexico Environment Department), June 18, 2016. "[Approval for the] 2016 Monitoring Plan for Los Alamos/Pueblo Watershed Sediment Transport Mitigation Project, Los Alamos National Laboratory," New Mexico Environment Department letter to D. Rhodes (DOE-EM-LA) and J. McCann (LANL) from J.E. Kieling (NMED-HWB), Santa Fe, New Mexico. (NMED 2016, 601563)

NMED (New Mexico Environment Department), July 11, 2017. "Approval with Modifications, 2017 Monitoring Plan for Los Alamos/Pueblo Watershed Sediment Transport Mitigation Project," New Mexico Environment Department letter to D. Hintze (DOE-NA-LA) and B. Robinson (LANL) from J.E. Kieling (NMED-HWB), Santa Fe, New Mexico. (NMED 2017, 602504)

NMED (New Mexico Environment Department), June 4, 2018. "Approval, 2018 Monitoring Plan for Los Alamos/Pueblo Watershed Sediment Transport Mitigation Project," New Mexico Environment Department letter to D. Hintze (DOE-EM-LA) and J. Legare (N3B) from J.E. Kieling (NMED-HWB), Santa Fe, New Mexico. (NMED 2018, 700007)

7.2 Map Data Sources

GageStation; Los Alamos National Laboratory, ER-ES, as published, project folder 15-0013; \\slip\gis\GIS\Projects\15-Projects\15-0013\zip\2015_E059.8_GageStation.shp; 2015.

Facility location; Los Alamos National Laboratory, ER-ES, as published, project folder 15-0013; \\slip\gis\GIS\Projects\15-Projects\15-0013\project_data.gdb;merge_sandia_features_AGAIN; 2015.

Erosion control structure; Los Alamos National Laboratory, ER-ES, as published, project folder 15-0013; \\slip\gis\GIS\Projects\15-Projects\15-0013\project_data.gdb;merge_sandia_features_AGAIN; 2015.

Sediment control structure; Los Alamos National Laboratory, ER-ES, as published, project folder 15-0013; \\slip\gis\GIS\Projects\15-Projects\15-0013\project_data.gdb;merge_sandia_features_AGAIN; 2015.

Willow planting area; Los Alamos National Laboratory, ER-ES, as published, project folder 14-0015; \\slip\gis\GIS\Projects\14-Projects\14-0015\shp\as_built_willow_banks.shp; 2015.

Structures; County of Los Alamos, Information Services; as published 29 October 2007.

Drainage; County of Los Alamos, Information Services; as published 16 May 2006.

Los Alamos County Boundary; Los Alamos National Laboratory, ENV Environmental Remediation and Surveillance Program; Unknown publication date.

Road Centerlines for the County of Los Alamos; County of Los Alamos, Information Services; as published 04 March 2009.

Watersheds; Los Alamos National Laboratory, ENV Environmental Remediation and Surveillance Program; EP2006-0942; 1:2,500 Scale Data; 27 October 2006.

Contour, 4-ft interval; Los Alamos National Laboratory, ER-ES, as published, project folder 15-0013; \\slip\gis\Data\HYP\LiDAR\2014\Bare_Earth\BareEarth_DEM_Mosaic.gdb; 2015.

Technical Area Boundaries; Los Alamos National Laboratory, Site Planning & Project Initiation Group, Infrastructure Planning Office; September 2007; as published 13 August 2010.

Sediment Geomorphology; Los Alamos National Laboratory, ENV Environmental Remediation and Surveillance Program, ER2002-0589; 1:1,200 Scale Data; 01 January 2002.

Monitoring area; Los Alamos National Laboratory, ER-ES, as published, project folder 15-0013; \\slip\gis\GIS\Projects\15-Projects\15-0013\zip\ZoomAreas.shp; 2015.

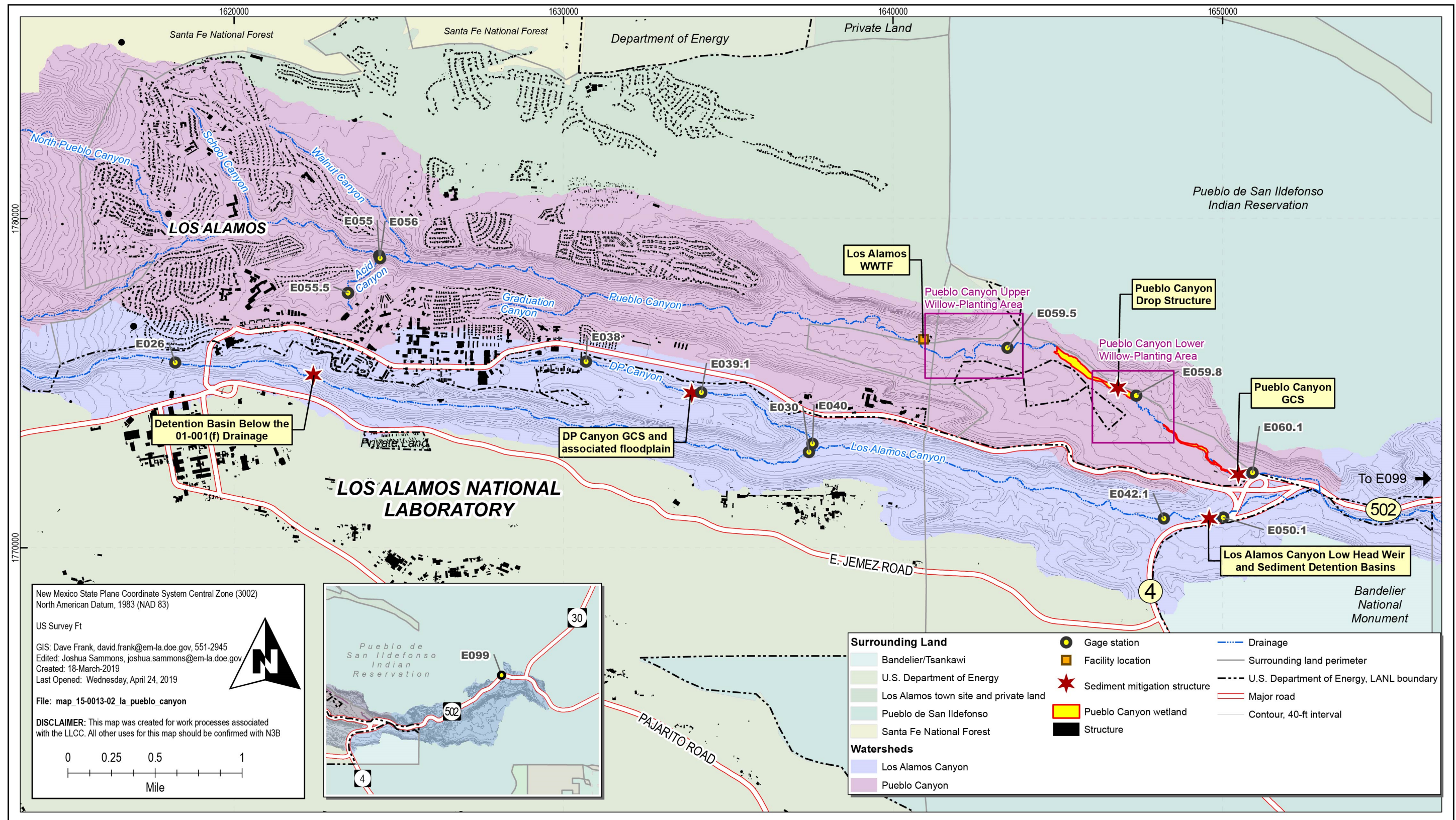


Figure 1.0-1 Monitoring locations and sediment trap mitigation sites in Los Alamos and Pueblo Canyons

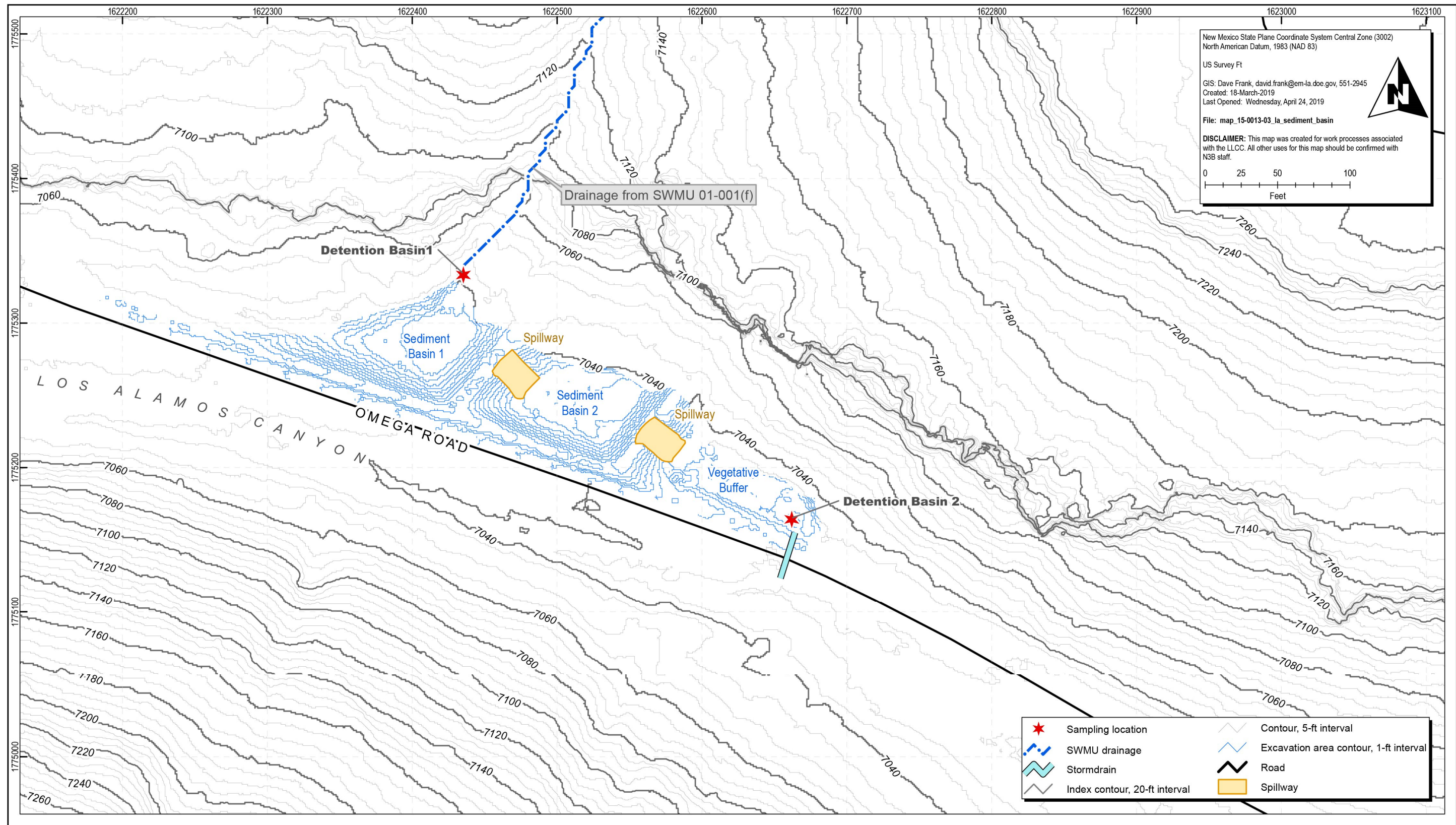


Figure 1.0-2 Detention basins and sampling locations below the SWMU 01-001(f) drainage

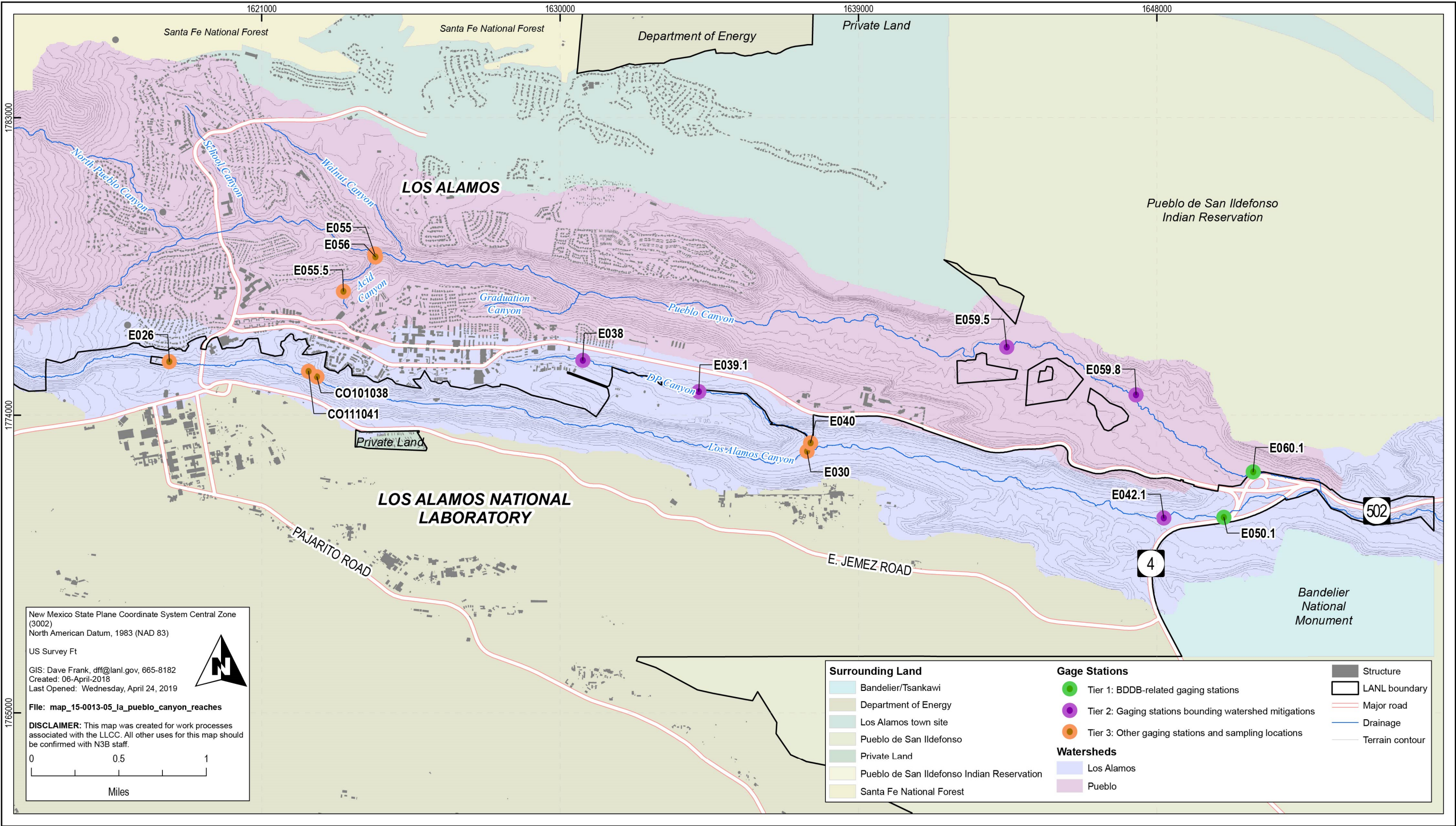


Figure 4.1-1 Three-tiered approach to sample retrieval when 1 business day collection is not feasible

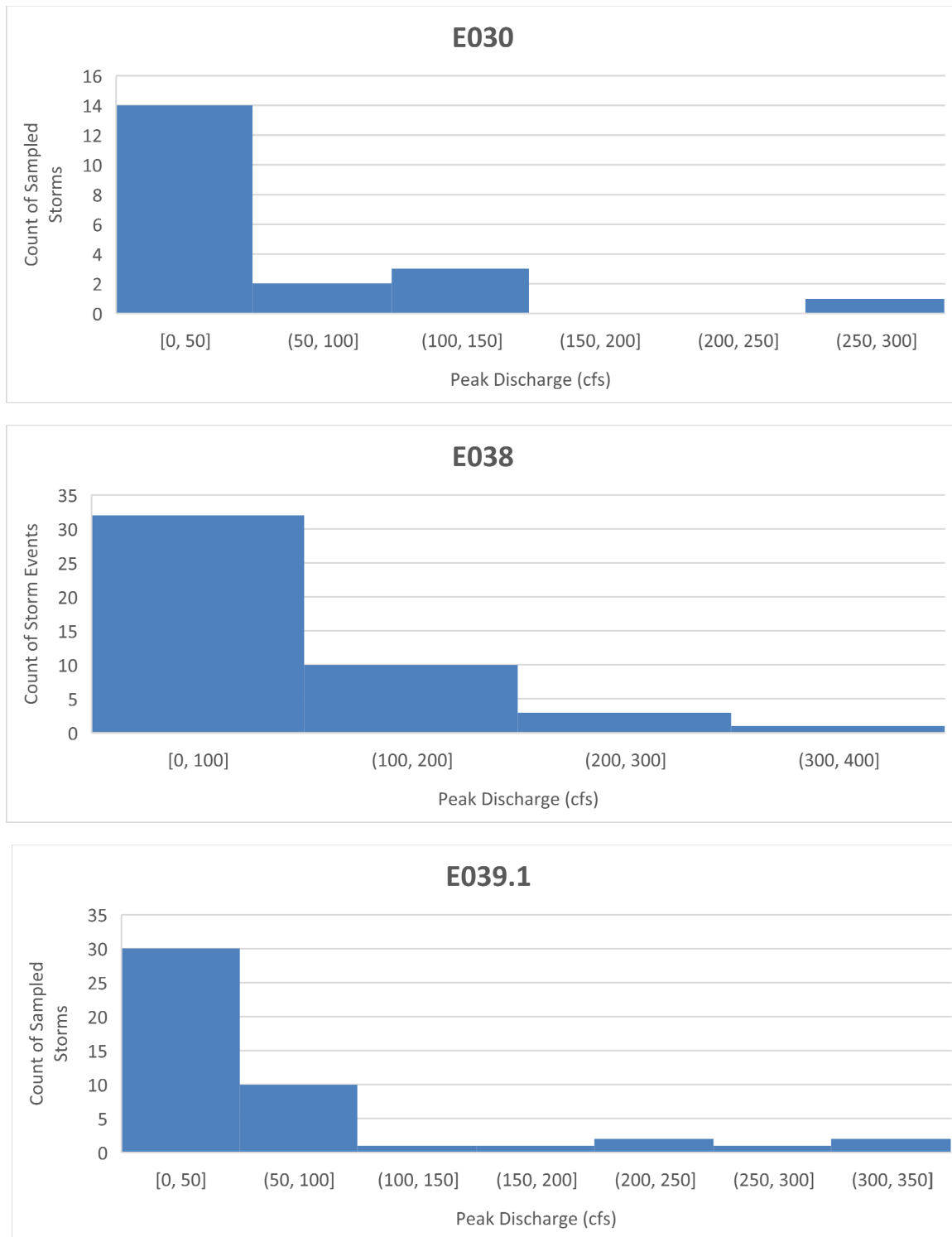


Figure 4.2-1 Sampled storm event peak discharge distribution 2010–2018

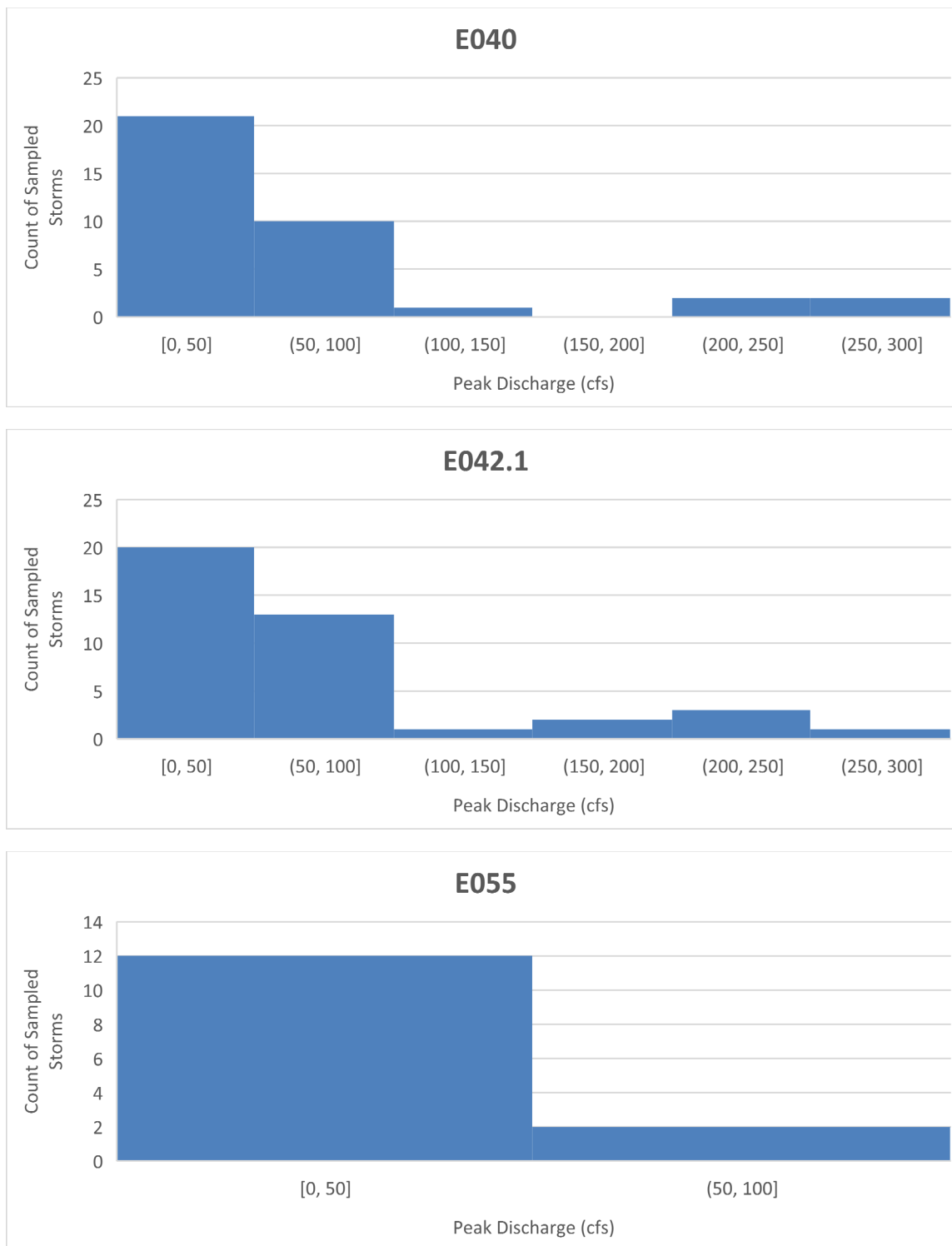


Figure 4.2-1 (continued) Sampled storm event peak discharge distribution 2010–2018

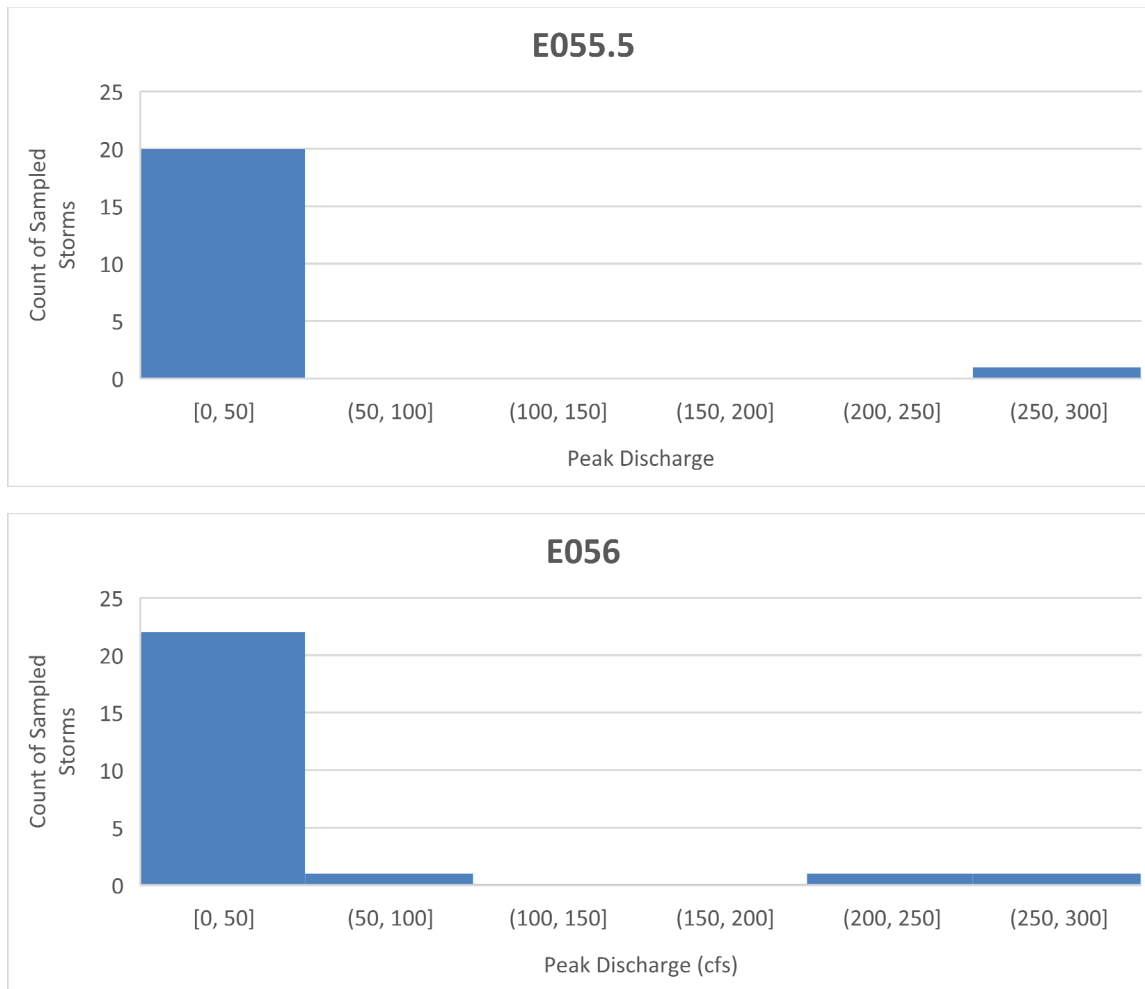


Figure 4.2-1 (continued) Sampled storm event peak discharge distribution 2010–2018

**Table 1.0-1
Monitoring Plans Submitted since 2010**

Monitoring Year	Monitoring Plan Name	Reference and Date Submitted	Approval	NMED Approval and Approval Date
2010	Monitoring Plan for Los Alamos and Pueblo Canyons Sediment Transport Mitigation Project	LANL 2009, 107457 10/15/2009	Approval with Modifications, Los Alamos and Pueblo Canyons Sediment Transport Monitoring Plan	NMED 2010, 108444 1/11/2010
2011	2011 Monitoring Plan for Los Alamos and Pueblo Canyons Sediment Transport Mitigation Project	LANL 2011, 201578 3/23/2011	Approval with Modifications [for the] 2011 Monitoring Plan for Los Alamos and Pueblo Canyons Sediment Transport Mitigation Project	NMED 2011, 203705 6/3/2011
2012	2012 Monitoring Plan for Los Alamos and Pueblo Canyons Sediment Transport Mitigation Project, Revision 2	LANL 2012, 222833 9/28/2012	Approval [for the] 2012 Monitoring Plan for Los Alamos and Pueblo Canyons Sediment Transport Mitigation Project, Revision 2	NMED 2013, 521854 1/23/2013
2013	2013 Monitoring Plan for Los Alamos and Pueblo Canyons Sediment Transport Mitigation Project, Revision 1	LANL 2013, 243432 6/21/2013	Approval [for the] 2013 Monitoring Plan for Los Alamos and Pueblo Canyons Sediment Transport Mitigation Project, Revision 1	NMED 2013, 523106 7/19/2013
2014	2014 Monitoring Plan for Los Alamos and Pueblo Canyons Sediment Transport Mitigation Project	LANL 2014, 256575 5/15/2014	Neither approved nor denied	n/a*
2015	2015 Monitoring Plan for Los Alamos/Pueblo Watershed Sediment Transport Mitigation Project	LANL 2015, 600438 5/15/2015	Approval with Modifications [for the] 2015 Monitoring Plan for Los Alamos/Pueblo Watershed Sediment Transport Mitigation Project	NMED 2015, 600507 6/12/2015
2016	2016 Monitoring Plan for Los Alamos/Pueblo Watershed Sediment Transport Mitigation Project	LANL 2016, 601434 4/28/2016	[Approval for the] 2016 Monitoring Plan for Los Alamos/Pueblo Watershed Sediment Transport Mitigation Project	NMED 2016, 601563 6/16/2016
2017	2017 Monitoring Plan for Los Alamos/Pueblo Watershed Sediment Transport Mitigation Project	LANL 2017, 602342 4/27/2017	Approval with Modifications [for the] 2017 Monitoring Plan for Los Alamos/Pueblo Watershed Sediment Transport Mitigation Project	NMED 2017, 602504 7/11/2017
2018	2018 Monitoring Plan for Los Alamos/Pueblo Watershed Sediment Transport Mitigation Project	LANL 2018, 603015 4/24/2018	Approval [for the] 2018 Monitoring Plan for Los Alamos/Pueblo Watershed Sediment Transport Mitigation Project	NMED 2018, 700007 6/4/2018

*n/a = Not applicable.

Table 2.0-1
Significant Geomorphic Changes and Associated Peak Discharges

Date	Station	Peak Discharge (cfs)	Noted Erosion in Geomorphic Changes Section of the Corresponding Year's Annual Report
8/5/2010	E039.1	275	The DP Canyon GCS was not damaged during storms in 2010
8/5/2010	E056	243	Three Pueblo Canyon cross-vane structures were extensively damaged
8/16/2010	E039.1	306	The DP Canyon GCS was not damaged during storms in 2010
8/16/2010	E056	256	Three Pueblo Canyon cross-vane structures were extensively damaged
8/16/2010	E059	243	Three Pueblo Canyon cross-vane structures were extensively damaged
8/19/2011	E039.1	267	No noted major erosion/stream altering events
8/19/2011	E040	153	No noted major erosion/stream altering events
8/19/2011	E038	181	No noted major erosion/stream altering events
8/21/2011	E039.1	281	No noted major erosion/stream altering events
8/21/2011	E038	229	No noted major erosion/stream altering events
8/21/2011	E040	208	No noted major erosion/stream altering events
8/22/2011	E042.1	171	No noted major erosion/stream altering events
7/11/2012	E042.1	290	Net sediment deposition for 2012 in the DP Canyon GCS area is greater than that recorded in 2011, this sediment deposition includes both channel aggradation and overbank deposition
7/11/2012	E050.1	117	Net sediment deposition for 2012 in the DP Canyon GCS area is greater than that recorded in 2011, this sediment deposition includes both channel aggradation and overbank deposition
8/3/2012	E042.1	211	Net sediment deposition for 2012 in the DP Canyon GCS area is greater than that recorded in 2011, this sediment deposition includes both channel aggradation and overbank deposition
8/3/2012	E050.1	168	Net sediment deposition for 2012 in the DP Canyon GCS area is greater than that recorded in 2011, this sediment deposition includes both channel aggradation and overbank deposition
8/3/2012	E026	130	Net sediment deposition for 2012 in the DP Canyon GCS area is greater than that recorded in 2011, this sediment deposition includes both channel aggradation and overbank deposition
7/12/2013	E038	330	The engineered structures in Los Alamos and DP Canyons appear to have enhanced sediment deposition in these areas
7/12/2013	E039.1	330	The engineered structures in Los Alamos and DP Canyons appear to have enhanced sediment deposition in these areas
7/12/2013	E040	260	The engineered structures in Los Alamos and DP Canyons appear to have enhanced sediment deposition in these areas

Table 2.0-1 (continued)

Date	Station	Peak Discharge (cfs)	Noted Erosion in Geomorphic Changes Section of the Corresponding Year's Annual Report
9/12/2013	E026	400	Although the September 2013 flood event resulted in significant erosion in most surveyed areas in Pueblo Canyon, the magnitude of the erosion was likely reduced by the sediment mitigation structures and willow plantings
9/12/2013	E056	260	Although the September 2013 flood event resulted in significant erosion in most surveyed areas in Pueblo Canyon, the magnitude of the erosion was likely reduced by the sediment mitigation structures and willow plantings
7/15/2014	E038	270	The net deposition observed in Los Alamos and DP Canyons was likely enhanced by the sediment mitigation structures
7/31/2014	E039.1	250	The net deposition observed in Los Alamos and DP Canyons was likely enhanced by the sediment mitigation structures
7/31/2014	E040	240	The net deposition observed in Los Alamos and DP Canyons was likely enhanced by the sediment mitigation structures
7/15/2014	E040	270	The net deposition observed in Los Alamos and DP Canyons was likely enhanced by the sediment mitigation structures
7/31/2014	E042.1	210	The net deposition observed in Los Alamos and DP Canyons was likely enhanced by the sediment mitigation structures
7/31/2014	E050.1	201	The net deposition observed in Los Alamos and DP Canyons was likely enhanced by the sediment mitigation structures
7/31/2015	E040	240	Minor erosion noted
7/31/2015	E039.1	220	Minor erosion noted
7/8/2017	E038	205	The LA/P watershed underwent minor geomorphologic changes during the 2017 monsoon season
7/8/2017	E039.1	150	The LA/P watershed underwent minor geomorphologic changes during the 2017 monsoon season
7/8/2017	E040	101	The LA/P watershed underwent minor geomorphologic changes during the 2017 monsoon season

Note: There were no large storm events in 2016 and 2018.

Table 4.0-1
Locations, Analytical Suites, and Drivers for Storm Water Sampling

Monitoring Group	Locations	Analytical Suites ^a		
		Los Alamos/Pueblo Watershed Sediment Transport Mitigation Project ^b	Investigative Studies	Supplemental BDDB Monitoring
Upper Los Alamos Canyon gaging stations	E026, E030	Dissolved TAL metals ^c + boron + uranium, hardness, PCBs ^d (by Method 1668A), gamma spectroscopy ^e , dioxins and furans, strontium-90, isotopic plutonium, total selenium, total mercury, total uranium, gross alpha, SSC, particle size	TOC ^f , total recoverable aluminum, BLM suite ^g	n/a ^h
DP Canyon gaging stations	E038, E039.1, E040	Dissolved TAL metals + boron + uranium, hardness, PCBs (by Method 1668A), gamma spectroscopy, isotopic plutonium, total selenium, total mercury, total uranium, gross alpha, strontium-90, SSC, particle size	TOC, total recoverable aluminum, BLM suite	n/a
Upper Pueblo Canyon, and Acid Canyon gaging stations	E055, E055.5, E056	Dissolved TAL metals + boron + uranium, hardness, PCBs (by Method 1668A), gamma spectroscopy, total selenium, total mercury, total uranium, gross alpha, isotopic plutonium, americium-241 (by alpha spectroscopy), total silver, SSC, particle size,	TOC, total recoverable aluminum, BLM suite	n/a
Lower Los Alamos Canyon gaging station	E042.1	Dissolved TAL metals + boron + uranium, hardness, PCBs (by Method 1668A), gamma spectroscopy, isotopic plutonium, americium-241 (by alpha spectroscopy), dioxins and furans, total selenium, total mercury, total uranium, gross alpha, strontium-90, SSC, particle size	TOC, total recoverable aluminum, BLM suite	n/a
Lower Los Alamos Canyon gaging station	E050.1	Dissolved TAL metals + boron + uranium, hardness, PCBs (by Method 1668A), gamma spectroscopy, isotopic plutonium, americium-241 (by alpha spectroscopy), dioxins and furans, strontium-90, total selenium, total mercury, total uranium, gross alpha, solid phase TAL metals, SSC, particle size	TOC, total recoverable aluminum, BLM suite	Gross beta, isotopic uranium, radium-226/radium-228

Table 4.0-1 (continued)

Monitoring Group	Locations	Analytical Suites ^a		
		Los Alamos/Pueblo Watershed Sediment Transport Mitigation Project ^b	Investigative Studies	Supplemental BDDDB Monitoring
Lower Pueblo Canyon gaging stations	E059.5, E059.8	Dissolved TAL metals + boron + uranium, hardness, PCBs (by Method 1668A), gamma spectroscopy, isotopic plutonium, americium-241 (by alpha spectroscopy), strontium-90, SSC, particle size, total silver, total selenium, total mercury, total uranium, gross alpha	TOC, total recoverable aluminum, BLM suite	n/a
Lower Pueblo Canyon gaging station	E060.1	Dissolved TAL metals + boron + uranium, hardness, PCBs (by Method 1668A), gamma spectroscopy, isotopic plutonium, americium-241 (by alpha spectroscopy), strontium-90, solid phase TAL metals, SSC, particle size, total selenium, total mercury, total uranium, gross alpha, dioxins and furans	TOC, total recoverable aluminum, BLM suite	Gross beta, isotopic uranium, radium-226/radium-228
Detention basins and vegetative buffer below the SWMU 01-001(f) drainage	CO101038, CO111041	Dissolved TAL metals + boron + uranium, hardness, PCBs (by Method 1668A), SSC, particle size, total selenium, total mercury, total uranium, gross alpha	TOC, total recoverable aluminum, BLM suite	n/a

^a Suites are listed in order of priority to guide analysis of limited water volume. SSC and particle size are independent of prioritization because they are derived from separate sample bottles.

^b Radionuclides are collected and reported per DOE Order 436.1.

^c TAL metals are Ag, Al, As, Ba, Be, Ca, Cd, Co, Cr, Cu, Fe, Hg, K, Mg, Mn, Na, Ni, Pb, Sb, Se, Ti, V, and Zn; hardness is calculated from calcium and magnesium, components of the TAL list.

^d PCBs = Polychlorinated biphenyls.

^e Gamma spectroscopy = Actinium-228, beryllium-7, bismuth-212, bismuth-214, cesium-134, cobalt-60, gross gamma, iodine-131, lead-212, lead-214, potassium-40, protactinium-234, sodium-22, thallium-208, and thorium-234.

^f TOC = Total organic carbon.

^g BLM suite = Biotic ligand model suite, which includes dissolved organic carbon, chloride, sulfate, alkalinity, and pH.

^h n/a = Not applicable.

Table 4.2-1
Sampled Storm Distribution in Relationship to Proposed Trip Level

Station	Proposed Trip Level (cfs)	Percent of Storms Sampled Less than or Equal to the Proposed Trip Level	Total Storms Samples (2010–2018)
E030	50	70%	20
E038	100	70%	46
E039.1	50	64%	47
E040	50	58%	36
E042.1	50	50%	40
E055	50	86%	14
E055.5	50	95%	21
E056	50	88%	25

Table 4.2-2
Analytical Requirements for Storm Water Samples

Analytical Suite	Method	Contract-Required Reporting Limit	Typical Detection Limit in Storm Water ^a	Upper Los Alamos Canyon (E026, E030)	Upper Pueblo Canyon and Acid Canyon (E055, E056, E055.5)	DP Canyon (E038, E039.1, E040)	Lower Los Alamos Canyon (E042.1, E050.1)	Lower Pueblo Canyon (E059.5, E059.8, E060.1)	Supplemental BDDDB Monitoring (E050.1, E060.1)	Detention Basins below the SWMU 01-001(f) Drainage
PCBs ^b	EPA:1668A	n/a ^c	25 pg/L	X ^d	X	X	X	X	— ^e	X
Isotopic plutonium	HASL-300	0.075 pCi/L	0.5 pCi/L	X	X	X	X	X	—	—
Gamma spectroscopy ^f	EPA:901.1	8 pCi/L (Cs-137)	10 pCi/L (Cs-137)	X	X	X	X	X	—	—
Isotopic uranium	HASL-300	0.1 pCi/L	0.5 pCi/L	—	—	—	—	—	X	—
Americium-241	HASL-300	0.075 pCi/L	0.5 pCi/L	—	X	—	X	X	—	—
Strontium-90	EPA:905.0	0.5 pCi/L	0.5 pCi/L	X	—	X	X	X	—	—
TAL metals ^g + B + U ^h	EPA:200.7/200.8/245.2	Variable	Variable	X	X	X	X	X	—	X
Total recoverable aluminum	EPA:200.8	100 µg/L	20 µg/L	X	X	X	X	X	—	X
Total selenium	EPA:200.8	1 µg/L	2 µg/L	X	X	X	X	X	—	X
Total silver	EPA:200.8	1 µg/L	0.3 µg/L	—	—	—	—	X	—	—
Total mercury	EPA:245.2	0.2 µg/L	0.067 µg/L	X	X	X	X	X	—	X
Total uranium	EPA:200.8	1 µg/L	0.2 µg/L	X	X	X	X	X	—	X
Total organic carbon	EPA:415.1	1000 µg/L	330 µg/L	X	X	X	X	X	—	X
Dioxins and furans	EPA:1613B	10–50 ng/L	50 pg/L	X	—	—	X	—	—	—
Gross alpha	EPA:900	3 pCi/L	10 pCi/L	X	X	X	X	X	—	X
Gross beta	EPA:900	3 pCi/L	10 pCi/L	—	—	—	—	—	X	—

Table 4.2-2 (continued)

Analytical Suite	Method	Contract-Required Reporting Limit	Typical Detection Limit in Storm Water ^a	Upper Los Alamos Canyon (E026, E030)	Upper Pueblo Canyon and Acid Canyon (E055, E056, E055.5)	DP Canyon (E038, E039.1, E040)	Lower Los Alamos Canyon (E042.1, E050.1)	Lower Pueblo Canyon (E059.5, E059.8, E060.1)	Supplemental BDDDB Monitoring (E050.1, E060.1)	Detention Basins below the SWMU 01-001(f) Drainage
Radium-226/Radium-228	EPA:903.1/EPA:904	1 pCi/L	0.5/0.5 pCi/L	—	—	—	—	—	X	—
SSC	ASTM: D3977-97	3 mg/L	10 mg/L	X	X	X	X	X	—	X
Particle size	ASTM:C1070	n/a	0.01%	X	X	X	X	X	—	X
Alkalinity ^j	EPA:310	n/a	n/a	X	X	X	X	X	—	X
pH ⁱ	EPA:150.1	n/a	n/a	X	X	X	X	X	—	X
Chloride ⁱ	EPA:300	n/a	0.1 mg/L	X	X	X	X	X	—	X
Sulfate ⁱ	EPA:300	n/a	0.5 mg/L	X	X	X	X	X	—	X
Dissolved organic carbon ⁱ	EPA:415.1	n/a	0.5 mg/L	X	X	X	X	X	—	X

^a MDL or MDA for radionuclides.

^b PCBs = Polychlorinated biphenyls.

^c n/a = Not applicable.

^d X = Monitoring planned.

^e — = Monitoring not planned.

^f Gamma spectroscopy = Actinium-228, beryllium-7, bismuth-212, bismuth-214, cesium-134, cobalt-60, gross gamma, iodine-131, lead-212, lead-214, potassium-40, protactinium-234, sodium-22, thallium-208, and thorium-234.

^g TAL metals are Ag, Al, As, Ba, Be, Ca, Cd, Co, Cr, Cu, Fe, Hg, K, Mg, Mn, Na, Ni, Pb, Sb, Se, Ti, V, and Zn; hardness is calculated from calcium and magnesium, components of the TAL list.

^h + B + U = Plus boron plus uranium.

ⁱ These analytical suites make up the biotic ligand model (BLM) analytical suite.

Table 4.2-3
Sampling Sequence for Collection of Storm Water Samples at the
Detention Basins and Vegetative Buffer below the SWMU 01-001(f) Drainage

Sample Bottle (1 L)	CO101038, CO111041	
	Start Time (min) 12-Bottle ISCO	Analytical Suite
1	Trigger	SSC ^a particle size
2	Trigger +2	PCBs ^b (UF ^c) Part 1 ^d
3	Trigger +4	TOC ^e (UF), DOC ^f (F ^g) + chloride (F) + sulfate (F) + alkalinity (UF) + pH (UF)
4	Trigger +6	PCBs (UF) Part 2
5	Trigger +8	TAL metals ^h + boron (F) + uranium (F) + hardness (F) + total recoverable aluminum (F10u ⁱ)
6	Trigger +10	Total selenium (UF), total mercury (UF), total uranium (UF)
7	Trigger +12	Gross alpha (UF)
8	Trigger +14	SSC
9	Trigger +16	Extra bottle
10	Trigger +18	Extra bottle
11	Trigger +20	Extra bottle
12	Trigger +22	Extra bottle

^a SSC = Suspended sediment concentration.

^b PCBs = Polychlorinated biphenyls.

^c UF = Unfiltered.

^d Bottles 2 and 4 are to be sent to the lab together for one PCBs analysis.

^e TOC = Total organic carbon.

^f DOC = Dissolved organic carbon.

^g F = Filtered through a 0.45-µm membrane.

^h TAL metals are Ag, Al, As, Ba, Be, Ca, Cd, Co, Cr, Cu, Fe, Hg, K, Mg, Mn, Na, Ni, Pb, Sb, Se, Ti, V, and Zn; hardness is calculated from calcium and magnesium, components of the TAL list.

ⁱ F10u = Filtered through a 10-µm membrane.

Table 4.2-4
Sampling Sequence for Collection of
Storm Water Samples at E026, E030, E055, E055.5, and E056

Sample Bottle (1 L)	Start Time (min) 12-Bottle ISCO	E026 and E030	Sample Bottle	Start Time (min) 12-Bottle ISCO	E055, E055.5, and E056
		Analytical Suites			Analytical Suites
1	Max+10	SSC ^a particle size	1	Max+10	SSC; particle size
2	Max+12	PCBs ^b (UF ^c) Part 1 ^d	2	Max+12	PCBs (UF) Part 1
3	Max+14	TOC ^e (UF), DOC ^f (F ^g) + chloride (F) + sulfate (F) + alkalinity (UF) + pH (UF)	3	Max+14	TOC (UF), DOC (F) + chloride (F) + sulfate (F) + alkalinity (UF) + pH (UF)
4	Max+16	PCBs (UF) Part 2	4	Max+16	PCBs (UF) Part 2
5	Max+18	TAL metals ^h + boron (F) + uranium (F) + hardness (F) + total recoverable aluminum (F10u ⁱ)	5	Max+18	TAL metals + (boron) B + (uranium) U + hardness (F) + total recoverable aluminum (F10u ⁱ)
6	Max+20	Total selenium (UF), total mercury (UF), total uranium (UF)	6	Max+20	Total selenium (UF), total mercury (UF), total uranium (UF), total silver (UF)
7	Max+22	Dioxins and furans (UF)	7	Max+22	Americium-241 (UF), isotopic plutonium (UF)
8	Max+24		8	Max+24	Gamma spectroscopy (UF), gross alpha (UF)
9	Max+26	Strontium-90 (UF)	9	Max+26	
10	Max+28	Gamma spectroscopy ^j (UF), gross alpha (UF), isotopic plutonium (UF)	10	Max+28	SSC
11	Max+30		11	Max+30	Extra bottle
12	Max+32	SSC	12	Max+32	Extra bottle

^a SSC = Suspended sediment concentration.

^b PCBs = Polychlorinated biphenyls.

^c UF = Unfiltered.

^d Bottles 2 and 4 are to be sent to the lab together for one PCBs analysis.

^e TOC = Total organic carbon.

^f DOC = Dissolved organic carbon.

^g F = Filtered through a 0.45-µm membrane.

^h TAL metals are Ag, Al, As, Ba, Be, Ca, Cd, Co, Cr, Cu, Fe, Hg, K, Mg, Mn, Na, Ni, Pb, Sb, Se, Ti, V, and Zn; hardness is calculated from calcium and magnesium, components of the TAL list.

ⁱ F10u = Filtered through a 10-µm membrane.

^j Gamma spectroscopy = Actinium-228, beryllium-7, bismuth-212, bismuth-214, cesium-134, cobalt-60, gross gamma, iodine-131, lead-212, lead-214, potassium-40, protactinium-234, sodium-22, thallium-208, and thorium-234.

Table 4.2-5
Sampling Sequence for Collection of Storm Water Samples at E038, E039.1, and E040

Sample Bottle (1 L)	Start Time (min) 12-Bottle ISCO	E038, E039.1, and E040	E038 and E039.1	
		Analytical Suites	Start Time (min) 24-Bottle ISCO	Analytical Suites 24-Bottle ISCO 1-L Poly Wedge
1	Max+10	SSC ^a particle size	Trigger	SSC
2	Max+12	PCBs ^b (UF ^c) Part 1 ^d	Trigger+2	SSC
3	Max+14	TOC ^e (UF), DOC ^f (F ^g) + chloride (F) + sulfate (F) + alkalinity (UF) + pH (UF)	Trigger+4	SSC
4	Max+16	PCBs (UF) Part 2	Trigger+6	SSC
5	Max+18	TAL metals ^h + boron (F) + uranium (F) + hardness (F) + total recoverable aluminum (F10u ⁱ)	Trigger+8	SSC
6	Max+20	Total selenium (UF), total mercury (UF), total uranium (UF)	Trigger+10	SSC
7	Max+22	Strontium-90 (UF)	Trigger+12	SSC
8	Max+24	Gamma spectroscopy ^j (UF), gross alpha (UF), isotopic plutonium (UF)	Trigger+14	SSC
9	Max+26		Trigger+16	SSC
10	Max+28	SSC	Trigger+18	SSC
11	Max+30	Extra bottle	Trigger+20	SSC
12	Max+32	Extra bottle	Trigger+22	SSC
13	n/a ^k	n/a	Trigger+24	SSC
14	n/a	n/a	Trigger+26	SSC
15	n/a	n/a	Trigger+28	SSC
16	n/a	n/a	Trigger+30	SSC
17	n/a	n/a	Trigger+50	SSC
18	n/a	n/a	Trigger+70	SSC
19	n/a	n/a	Trigger+90	SSC
20	n/a	n/a	Trigger+110	SSC
21	n/a	n/a	Trigger+130	SSC
22	n/a	n/a	Trigger+150	SSC
23	n/a	n/a	Trigger+170	SSC
24	n/a	n/a	Trigger+190	SSC

^a SSC = Suspended sediment concentration.

^b PCBs = Polychlorinated biphenyls.

^c UF = Unfiltered.

^d Bottles 2 and 4 are to be sent to the lab together for one PCBs analysis.

^e TOC = Total organic carbon.

^f DOC = Dissolved organic carbon.

^g F = Filtered through a 0.45-µm membrane.

^h TAL metals are Ag, Al, As, Ba, Be, Ca, Cd, Co, Cr, Cu, Fe, Hg, K, Mg, Mn, Na, Ni, Pb, Sb, Se, Ti, V, and Zn; hardness is calculated from calcium and magnesium, components of the TAL list.

ⁱ F10u = Filtered through a 10-µm membrane.

^j Gamma spectroscopy = Actinium-228, beryllium-7, bismuth-212, bismuth-214, cesium-134, cobalt-60, gross gamma, iodine-131, lead-212, lead-214, potassium-40, protactinium-234, sodium-22, thallium-208, and thorium-234.

^k n/a = Not applicable.

Table 4.2-6
Sampling Sequence for Collection of Storm Water Samples at E042.1

Sample Bottle (1 L)	Start Time (min) 12-Bottle ISCO	Analytical Suites 12-Bottle ISCO	Start Time (min) 24-Bottle ISCO	Analytical Suites 24-Bottle ISCO 1-L Poly Wedge
1	Max+10	SSC ^a particle size	Trigger	SSC
2	Max+12	PCBs ^b (UF ^c) Part 1 ^d	Trigger+2	SSC
3	Max+14	TOC ^e (UF), DOC ^f (F ^g) + chloride (F) + sulfate (F) + alkalinity (UF) + pH (UF)	Trigger+4	SSC
4	Max+16	PCBs (UF) Part 2	Trigger+6	SSC
5	Max+18	TAL metals ^h + boron (F) + uranium (F) + hardness (F) + total recoverable aluminum (F10u ⁱ)	Trigger+8	SSC
6	Max+20	Total selenium (UF), total mercury (UF), total uranium (UF)	Trigger+10	SSC
7	Max+22	Dioxins and furans (UF)	Trigger+12	SSC
8	Max+24	Strontium-90 (UF)	Trigger+14	SSC
9	Max+26	Gamma spectroscopy ^j (UF), gross alpha (UF)	Trigger+16	SSC
10	Max+28		Trigger+18	SSC
11	Max+60	Americium-241 (UF), isotopic plutonium (UF)	Trigger+20	SSC
12	Max+62	SSC	Trigger+22	SSC
13	n/a ^k	n/a	Trigger+24	SSC
14	n/a	n/a	Trigger+26	SSC
15	n/a	n/a	Trigger+28	SSC
16	n/a	n/a	Trigger+30	SSC
17	n/a	n/a	Trigger+50	SSC
18	n/a	n/a	Trigger+70	SSC
19	n/a	n/a	Trigger+90	SSC
20	n/a	n/a	Trigger+110	SSC

Table 4.2-6 (continued)

Sample Bottle (1 L)	Start Time (min) 12-Bottle ISCO	Analytical Suites 12-Bottle ISCO	Start Time (min) 24-Bottle ISCO	Analytical Suites 24-Bottle ISCO 1-L Poly Wedge
21	n/a	n/a	Trigger+130	SSC
22	n/a	n/a	Trigger+150	SSC
23	n/a	n/a	Trigger+170	SSC
24	n/a	n/a	Trigger+190	SSC

^a SSC = Suspended sediment concentration.

^b PCBs = Polychlorinated biphenyls.

^c UF = Unfiltered.

^d Bottles 2 and 4 are to be sent to the lab together for one PCBs analysis.

^e TOC = Total organic carbon.

^f DOC = Dissolved organic carbon.

^g F = Filtered through a 0.45-µm membrane.

^h TAL metals are Ag, Al, As, Ba, Be, Ca, Cd, Co, Cr, Cu, Fe, Hg, K, Mg, Mn, Na, Ni, Pb, Sb, Se, Ti, V, and Zn; hardness is calculated from calcium and magnesium, components of the TAL list.

ⁱ F10u = Filtered through a 10-µm membrane.

^j Gamma spectroscopy = Actinium-228, beryllium-7, bismuth-212, bismuth-214, cesium-134, cobalt-60, gross gamma, iodine-131, lead-212, lead-214, potassium-40, protactinium-234, sodium-22, thallium-208, and thorium-234.

^k n/a = Not applicable.

Table 4.2-7
Sampling Sequence for Collection of Storm Water Samples at E059.5 and E059.8

Sample Bottle (1 L)	Start Time (min) 12-Bottle ISCO	Analytical Suites 12-Bottle ISCO	Start Time (min) 24-Bottle ISCO	Analytical Suites 24-Bottle ISCO 1-L Poly Wedge
1	Max+10	SSC ^a particle size	Trigger	SSC
2	Max+12	PCBs ^b (UF ^c) Part 1 ^d	Trigger+2	SSC
3	Max+14	TOC ^e (UF), DOC ^f (F ^g) + chloride (F) + sulfate (F) + alkalinity (UF) + pH (UF)	Trigger+4	SSC
4	Max+16	PCBs (UF) Part 2	Trigger+6	SSC
5	Max+18	TAL metals ^h + boron (F) + uranium (F) + hardness (F) + total recoverable aluminum (F10u ⁱ)	Trigger+8	SSC
6	Max+20	Total selenium (UF), total mercury (UF), total uranium (UF), total silver (UF)	Trigger+10	SSC
7	Max+22	Strontium-90 (UF)	Trigger+12	SSC
8	Max+24	Americium-241 (UF), isotopic plutonium (UF)	Trigger+14	SSC
9	Max+26	Gamma spectroscopy ^j (UF), gross alpha (UF)	Trigger+16	SSC
10	Max+28		Trigger+18	SSC
11	Max+60	SSC	Trigger+20	SSC
12	Max+62	Extra bottle	Trigger+22	SSC
13	n/a ^k	n/a	Trigger+24	SSC
14	n/a	n/a	Trigger+26	SSC
15	n/a	n/a	Trigger+28	SSC
16	n/a	n/a	Trigger+30	SSC
17	n/a	n/a	Trigger+50	SSC
18	n/a	n/a	Trigger+70	SSC
19	n/a	n/a	Trigger+90	SSC
20	n/a	n/a	Trigger+110	SSC

Table 4.2-7 (continued)

Sample Bottle (1 L)	Start Time (min) 12-Bottle ISCO	Analytical Suites 12-Bottle ISCO	Start Time (min) 24-Bottle ISCO	Analytical Suites 24-Bottle ISCO 1-L Poly Wedge
21	n/a	n/a	Trigger+130	SSC
22	n/a	n/a	Trigger+150	SSC
23	n/a	n/a	Trigger+170	SSC
24	n/a	n/a	Trigger+190	SSC

^a SSC = Suspended sediment concentration.

^b PCBs = Polychlorinated biphenyls.

^c UF = Unfiltered.

^d Bottles 2 and 4 are to be sent to the lab together for one PCBs analysis.

^e TOC = Total organic carbon.

^f DOC = Dissolved organic carbon.

^g F = Filtered through a 0.45-µm membrane.

^h TAL metals are Ag, Al, As, Ba, Be, Ca, Cd, Co, Cr, Cu, Fe, Hg, K, Mg, Mn, Na, Ni, Pb, Sb, Se, Ti, V, and Zn; hardness is calculated from calcium and magnesium, components of the TAL list.

ⁱ F10u = Filtered through a 10-µm membrane.

^j Gamma spectroscopy = Actinium-228, beryllium-7, bismuth-212, bismuth-214, cesium-134, cobalt-60, gross gamma, iodine-131, lead-212, lead-214, potassium-40, protactinium-234, sodium-22, thallium-208, and thorium-234.

^k n/a = Not applicable.

Table 4.2-8
Sampling Sequence for Collection of Storm Water Samples at E050.1 and E060.1

Sample Bottle (1 L)	Start Time (min) 12-Bottle ISCO	Analytical Suites 12-Bottle ISCO	Start Time (min) 24-Bottle ISCO	Analytical Suites 24-Bottle ISCO 1-L Poly Wedge
1	Max+10	SSC ^a particle size	Trigger	SSC
2	Max+12	PCBs ^b (UF ^c)	Trigger+2	SSC
3	Max+14	TOC ^d (UF), DOC ^e (F ⁱ) + chloride (F) + sulfate (F) + alkalinity (UF) + pH (UF)	Trigger+4	SSC
4	Max+16	PCBs (UF)	Trigger+6	SSC
5	Max+18	TAL metals ^g + boron (F) + uranium (F) + hardness (F) + total recoverable aluminum (F10u ^h)	Trigger+8	SSC
6	Max+20	Total selenium (UF), total mercury (UF), total uranium (UF)	Trigger+12	SSC
7	Max+22	Dioxins and furans (UF)	Trigger+14	SSC
8	Max+24	Strontium-90 (UF)	Trigger+16	Gross beta (UF)
9	Max+26	Gamma spectroscopy ⁱ (UF), gross alpha (UF)	Trigger+18	SSC
10	Max+28	Isotopic plutonium (UF), americium-241 (UF), isotopic uranium (UF)	Trigger+20	Radium-226/radium-228 (UF)
11	Max+60		Trigger+22	
12	Max+62	SSC	Trigger+24	SSC
13	n/a ^j	n/a	Trigger+26	Per this monitoring plan, section 3.6: TAL metals + boron + uranium + hardness (F/UF), solid phase TAL metals + boron + uranium, SSC
14	n/a	n/a	Trigger+28	
15	n/a	n/a	Trigger+30	SSC
16	n/a	n/a	Trigger+50	SSC
17	n/a	n/a	Trigger+70	SSC
18	n/a	n/a	Trigger+90	SSC
29	n/a	n/a	Trigger+110	SSC
20	n/a	n/a	Trigger+130	SSC

Table 4.2-8 (continued)

Sample Bottle (1 L)	Start Time (min) 12-Bottle ISCO	Analytical Suites 12-Bottle ISCO	Start Time (min) 24-Bottle ISCO	Analytical Suites 24-Bottle ISCO 1-L Poly Wedge
21	n/a	n/a	Trigger+150	SSC
21	n/a	n/a	Trigger+170	SSC
23	n/a	n/a	Trigger+190	SSC
24	n/a	n/a	Trigger+210	SSC

^a SSC = Suspended sediment concentration.

^b PCBs = Polychlorinated biphenyls.

^c UF = Unfiltered.

^d TOC = Total organic carbon.

^e DOC = Dissolved organic carbon.

^f F = Filtered through a 0.45-µm membrane.

^g TAL metals are Ag, Al, As, Ba, Be, Ca, Cd, Co, Cr, Cu, Fe, Hg, K, Mg, Mn, Na, Ni, Pb, Sb, Se, Ti, V, and Zn; hardness is calculated from calcium and magnesium, components of the TAL list.

^h F10u = Filtered through a 10-µm membrane.

ⁱ Gamma spectroscopy = Actinium-228, beryllium-7, bismuth-212, bismuth-214, cesium-134, cobalt-60, gross gamma, iodine-131, lead-212, lead-214, potassium-40, protactinium-234, sodium-22, thallium-208, and thorium-234.

^j n/a = Not applicable.

